



ASSET TRACKING

Effective Management of physical assets is key to determining productivity. Time wasted looking for equipment, the cost of lost or stolen assets quickly impacts your bottom line. Through the deployment of a WITTRA asset tracking solutions you realise the ability to gain global visibility in any environment helping in the improvement of productivity, efficiency and a reduction in overall operational costs in addition to preventing theft and waste. The WITTRA approach to asset tracking also includes activity data allowing you to answer to the question 'where is my stuff and what is it doing?'

TARGET APPLICATIONS

- Equipment Management
- Preventative Maintenance Asset Utilization
- Resource Optimization
- Theft Prevention
- Automation

TOP CHALLENGES

- Cost of Implementation
- Infrastructure
- Ease of Deployment
- Complex Environment (indoor/outdoor)
- Total Asset Visibility
- Security



WITTRA IOT OUT OF THE BOX

WITTRA IOT out of the box is a wireless sensor network kit with a cloud-based API that can be deployed on a site to monitor objects and assets. The ruggedized kit enables users to Connect, Sense and Locate their assets in the toughest environments and areas of weak connectivity. The use of sub-GHz frequency bands provides a long transmission range and enables the signal to penetrate dense building infrastructure. With certified hardware, the kit is secure, easy to deploy and ready for field deployment.

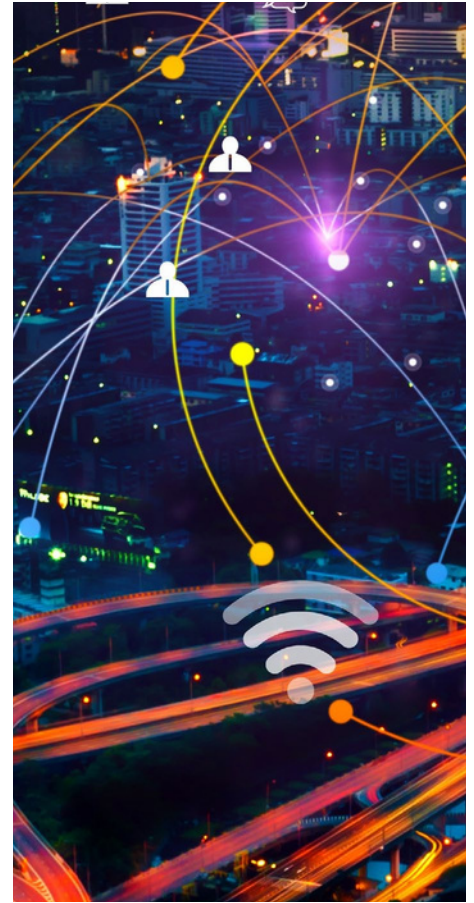
THE WITTRA SOLUTION TO YOUR CHALLENGES?

WITTRA offers the only solution to allow users to Connect, Sense and Locate their assets in the toughest environments or areas of weak connectivity in a single technology deployment. We accelerate and simplify IoT delivering predictable pricing and a predefined ROI.

SOLUTION OVERVIEW

Building an IoT solution with WiTTTRA is child's play, simplifying complexity is a key element of the WiTTTRA DNA. WiTTTRA's Network Kits allow users to collect, communicate with and control their assets on day one. Our web portal simplifies device commissioning, and the network monitoring tools ensure ease of deployment; And together with our cooperation with several world-leading platform providers, WiTTTRA offer the simplest way to build end customer solutions, Month becomes days. WiTTTRA overcomes connectivity issues, devices run in an IP-based radio network. Using sub-GHz radio bands WiTTTRA provides long-range and good penetration of structures with the option of a cellular backhaul.

- Predictive / Preventative maintenance through usage data and analytics
- Data for workflow planning / Automated equipment utilization reporting
- Heat-map generation for resource monitoring
- Reduce carbon footprint. Increased efficiencies generate cost savings
- Rugged for harsh environments
- Strong signal penetration strength
- Less hardware and lower implementation costs of deployment



KEY BENEFITS

WiTTTRA will help you reduce development and operational costs.

- Quick and easy application development cycle, weeks become days
- Accurate location and orientation, multi-axis positioning down to 1 meter
- Future proof. Extend with click-on sensors and third-party sensors
- Build comprehensive, cost-efficient, and competitive solutions
- Based on open standards for quick and easy interoperability
- Easy to install, integrate, support, and maintain
- True mesh eliminates radio black spots, giving total asset visibility in all environments
- Highly secure using TPM authentication chips in all devices

✔ Certified

✔ Ruggedized IP67

✔ Cloud API

✔ Plug and Play



ABOUT WiTTTRA

WiTTTRA Sweden AB develops innovative technologies and solutions within Internet of Things (IoT). Since its start in 2012, WiTTTRA has been able to secure a substantial portfolio of intellectual property and rights linked to its innovations. The unique pre-integrated, pre-tested and pre-secure solutions allow users to collect, communicate and control their assets even in the toughest of environments.