

TrakSense360

Features:

- Compact, rugged wireless TrakSense360
- Sealed to IP67
- Pre-certified, ready for field deployment
- Secure
- Easy to set up, easy to use
- Rechargeable Tag battery provides months of life (usage dependent)

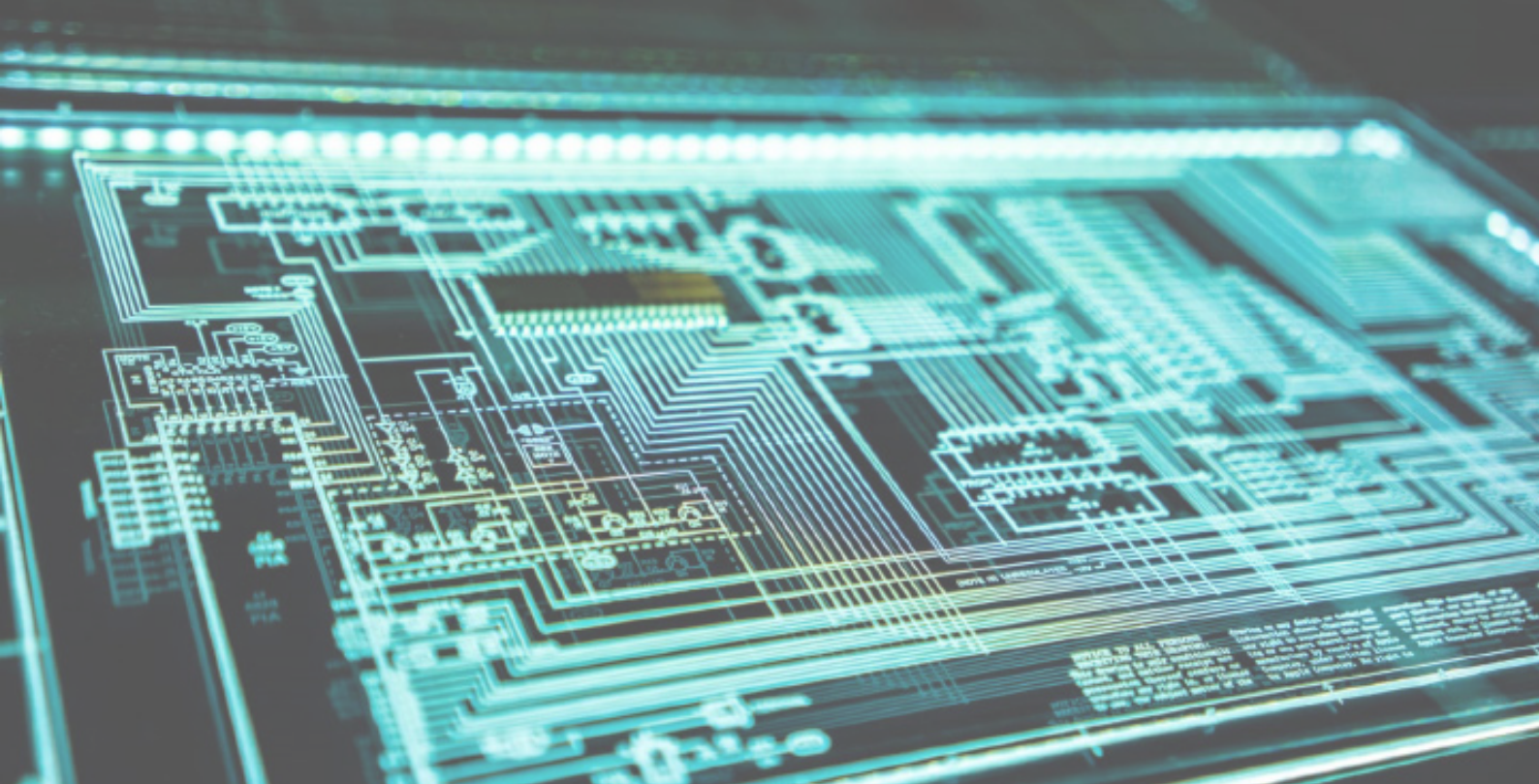


Description:

The TrakSense360 includes several integrated sensors, location functions and modern radio/communication technologies to deliver data to the cloud service. Accessories for installation are available.

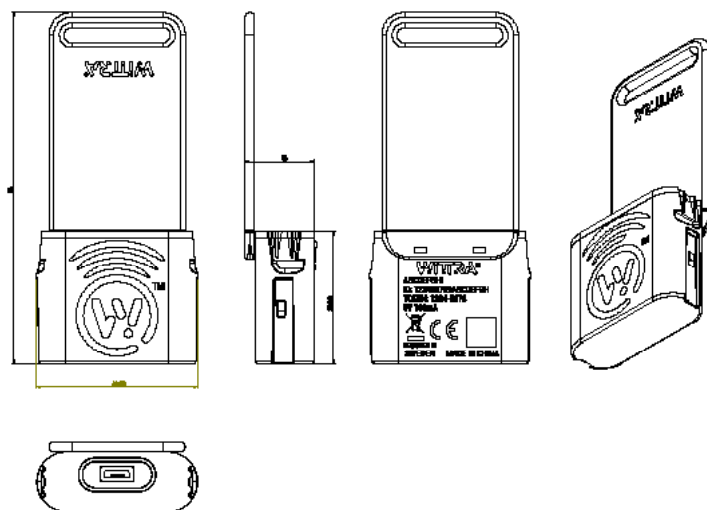
SPECIFICATION	
Size	40 x 40 x 15mm (body only) 90 x 40 x 15mm (with flex tail)
Weight	35g
Operating temperature	-30°C to +60°C **
Environmental Rating	IP67
Battery	360mAh LiPo Rechargeable
Physical Interface	Micro-B USB
Maximum Input Power	100mA @5V (during battery charge)
Average Current Consumption	50uA
Sleep Current	11uA
Radio Transmit Frequency	863 - 870MHz (EU) or 902 - 928MHz (USA)
Radio Transmit Power	20mW EIRP max
Data Transmission Rate	50kbps (as per IEEE 802.15.4g)
Regulatory Compliance	CE (EU) or FCC (USA)
Security	DTLS
Accelerometer	3D MEMS 25Hz Sampling
Magnetometer	3D MEMS 20Hz Sampling
Temperature	MEMS, Absolute Accuracy ±2°C

** Note: With Wittra External Battery Pack (P/N 1000248). This will allow continuous operation down to -30 degrees C. Please refer to WITRA hardware supplier for purchase options.

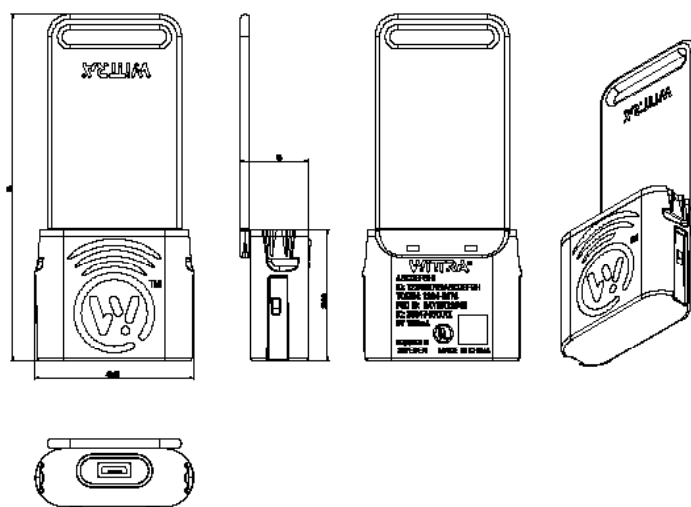


TrakSense360

TRAKSENSE EU



TRAKSENSE US



WITRA SWEDEN AB Wittra Sweden AB, Västra
Järnvägsgatan 3 (9th Floor), 111 64 Stockholm,
Sweden t: +46 8 387871 e: info@wittra.se
www.wittra.io
ISS.1 23/03/2020

General Note: All datasheets are subject to
change without notice.