

Mesh Router

Features:

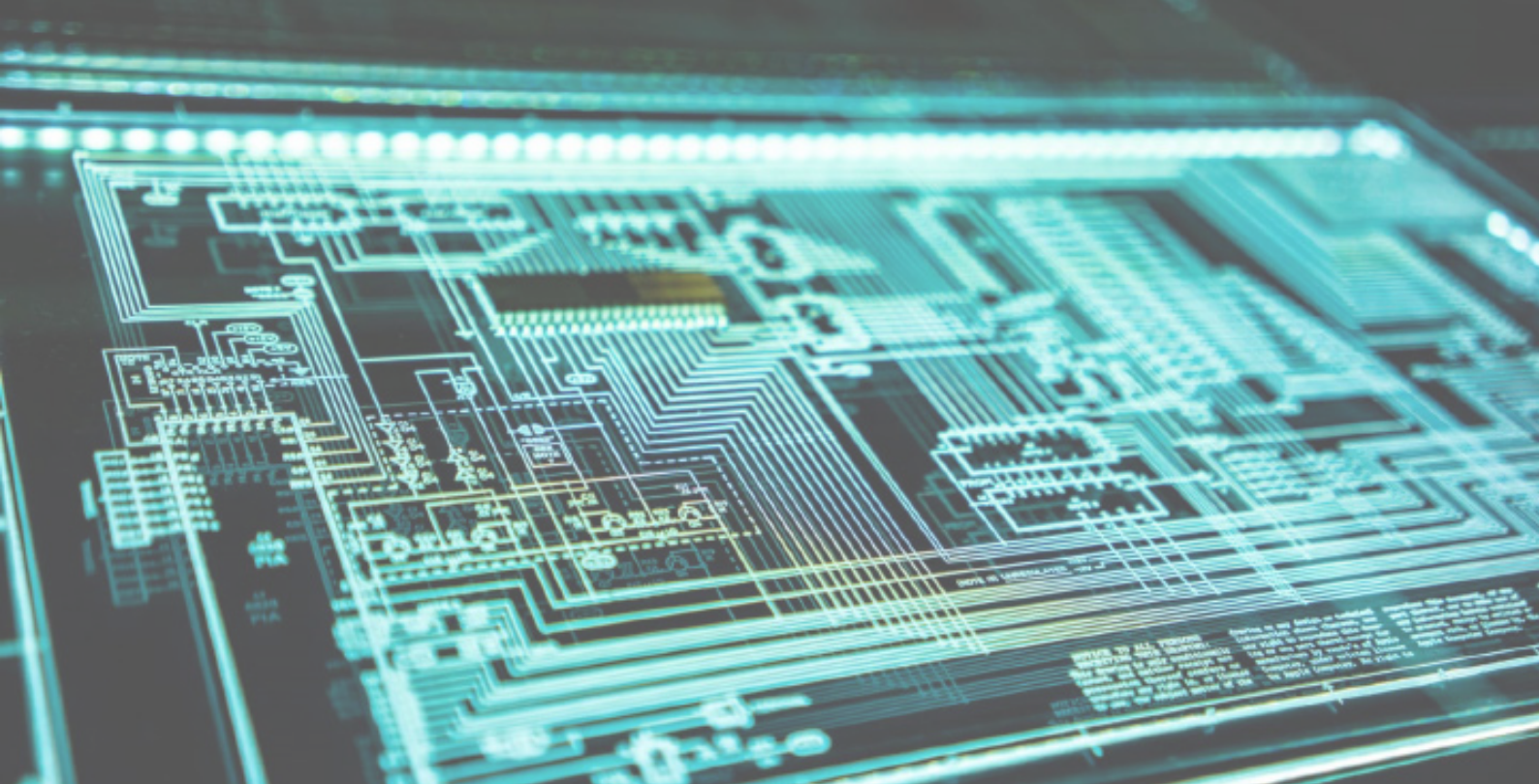
- Small, rugged wireless mesh router
- Sealed to IP51
- Pre-certified, ready for field deployment
- Secure fixed nodes
- Easy to set up, easy to use



Description:

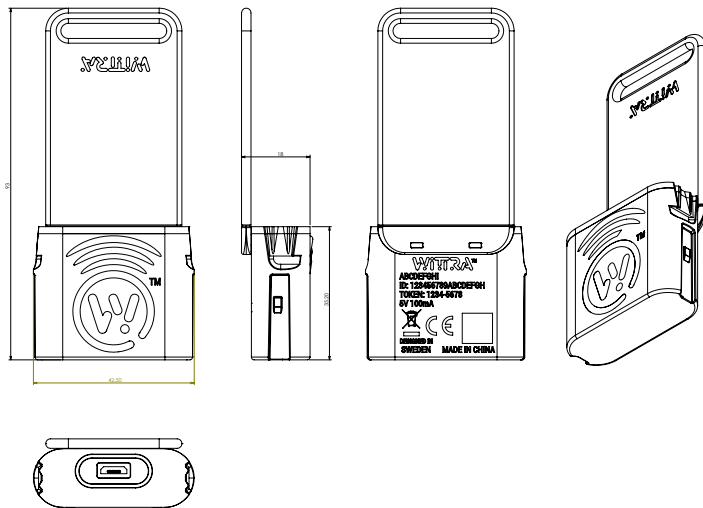
The backbone component for message routing in IOT OUT OF THE BOX™, the mesh-router provides scalability by forming a multi-hop network to achieve a larger coverage area for the TrakSense360.

SPECIFICATION	
Size	40 x 40 x 15mm (without flex tail) 90 x 40 x 15mm (with flex tail)
Weight	35g
Operating Temperature	-10°C to +60°C
Environmental Rating	IP51
Battery	360mAH LiPo Rechargeable
Physical Interface	Micro-B USB
Maximum Input Power	100mA @5V (during battery charge)
Average Current Consumption	8mA
Radio Transmit Frequency	863 - 870 MHz (EU) or 902 - 928MHz (USA)
Radio Transmit Power	20mW EIRP max
Data Transmit Power	50kbps (as per IEEE 802.15.4g)
Regulatory Compliance	CE (EU) or FCC (USA)
Security	DTLS



MESH ROUTER

MESH ROUTER EU



MESH ROUTER US

